



The  
Geological  
Society

*servicing science & profession*

North West Regional Group

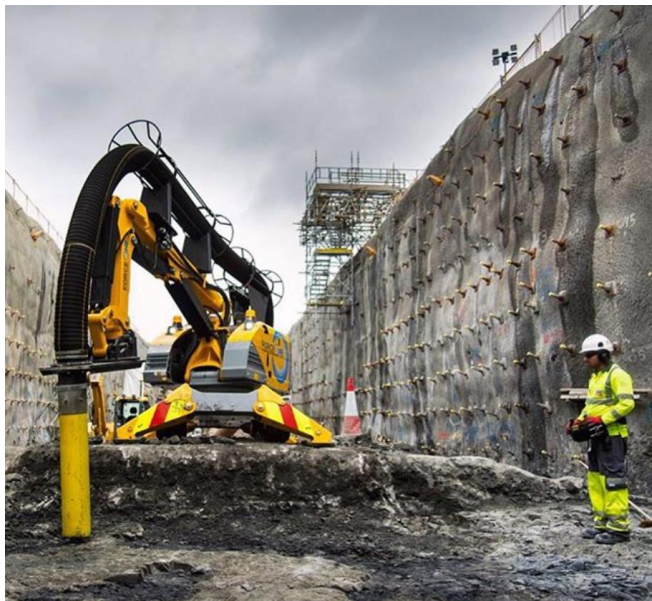
# Meeting

Thursday 16<sup>th</sup> May 2019

## Rock Slopes at Hinckley Point C

By Victoria Edmonds and Ady Koe

Hinkley Point C (HPC) nuclear power station is the first new nuclear power station to be constructed in the UK in a generation. The two new EPR reactors will produce 3200MWe of power and will cost approximately £20bn to construct. Construction work on the Earthworks contract has been ongoing since Autumn 2016 and is due to be completed later this year, with the power station going online in 2025.



This talk will discuss the geology of the site and provide insight into the design and construction of the rock slopes associated with the deep dig.

There are approximately 150 individually designed vertical rock slopes, up to 35m high. Ady and Victoria have been site based at HPC specifically working on the rock slopes and will provide insights from the Design & Build contractor and Client's side.

**Victoria Edmonds** is a chartered geologist with over ten years of experience in the geotechnical industry. Her career started with a ground investigation contractor in the UK, but following a few years in Australia she started consultancy work at Atkins in the UK. Most recently Victoria has been involved with the UK nuclear industry for new build nuclear power stations. Victoria has supervised the detailed ground investigation at Wylfa, Anglesey and was part of the team writing the interpretative GIR for this project. Victoria has just completed a secondment to EDF, as part of the Hinkley Point C team, where she was in the Site Engineering team delivering the Earthworks design packages and managing any subsequent design changes, specifically for the rock slopes.

**Ady Koe** is a Chief Geotechnical Engineer and the rock engineering Technical Authority for Atkins. Adrian has focused much of his career on rock engineering projects and has over 20 years' experience in this field. He has worked in several industry sectors including rail, mining, highways and energy. Adrian's experience includes being lead author on the recent CIRIA Rock Netting Guide C775.

**Tea Coffee and Biscuits from 6pm**

**Lecture starts promptly at 6.30pm**

Venue: **Williamson Lecture Theatre, Manchester University**, Oxford Road, Manchester M13 9LP

<http://www.manchester.ac.uk/discover/maps/>

Organised by the North West group of the Geological Society of London For further information contact the group secretary, Catherine Kenny at: [Geologicalsociety.northwest@gmail.com](mailto:Geologicalsociety.northwest@gmail.com)

The Geological Society of London is a registered charity No 210161

**CPD:** These events may be considered for contributing to a recognised Continuing Professional Development (CPD) scheme as part of personal development. Delegates should check their individual scheme requirements.